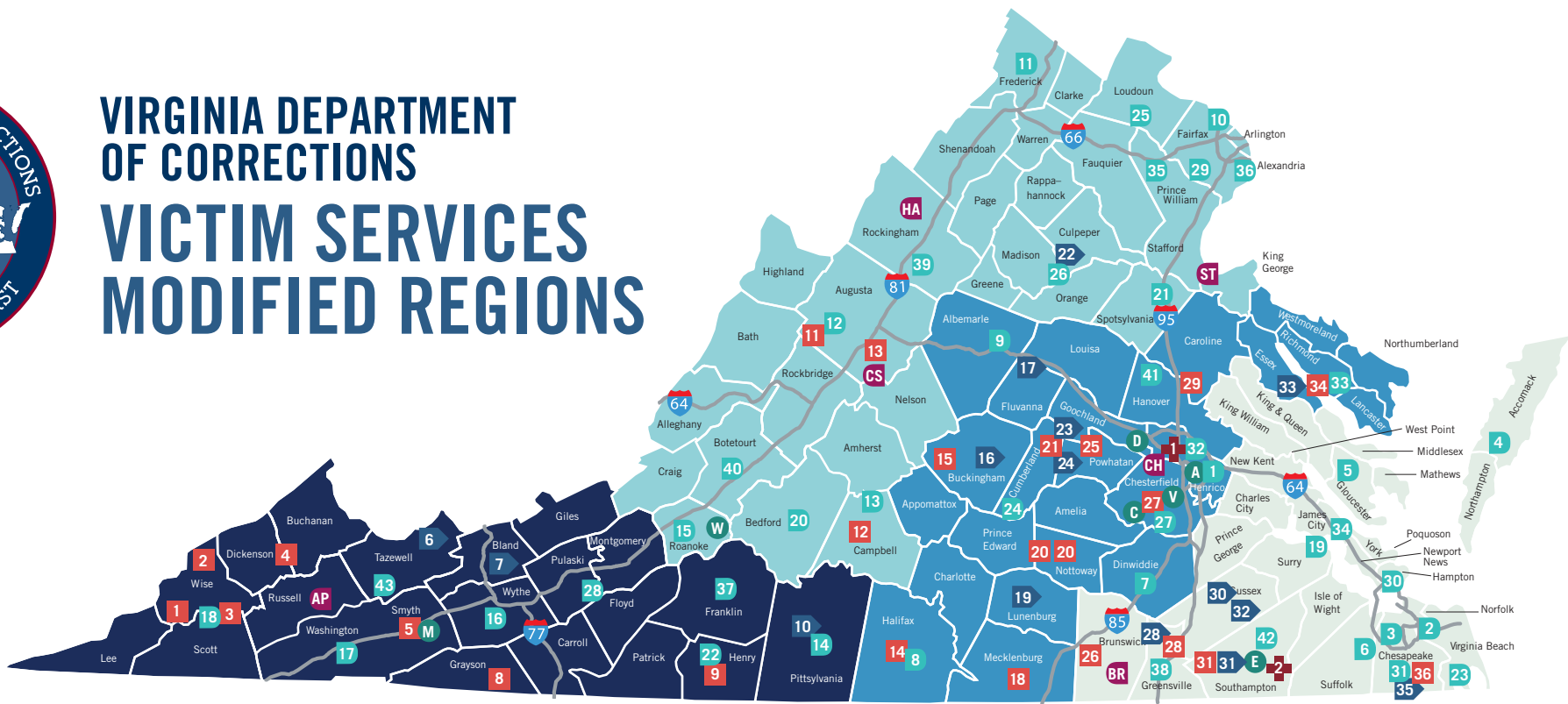




# VIRGINIA DEPARTMENT OF CORRECTIONS VICTIM SERVICES MODIFIED REGIONS



## MODIFIED SOUTHWESTERN REGION

## MODIFIED NORTHWESTERN REGION

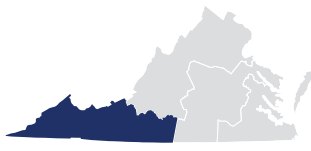
## MODIFIED CENTRAL REGION

## MODIFIED EASTERN REGION

### MAP LEGEND

- FACILITIES
- ▶ INTENSIVE RE-ENTRY SITES
- + SECURE MEDICAL FACILITIES
- PROBATION & PAROLE DISTRICTS
- COMMUNITY FACILITIES
- ADMINISTRATIVE OFFICES
- MAJOR HIGHWAYS

### MODIFIED SOUTHWESTERN REGION



#### FACILITIES

- ▶ 7 Bland Correctional Center
- ▶ 10 Green Rock Correctional Center

- 4 Keen Mountain Correctional Center
- 5 Marion Correctional Treatment Center
- 9 Patrick Henry Correctional Unit
- ▶ 6 Pocahontas State Correctional Center
- 2 Red Onion State Prison

- 8 River North Correctional Center
  - 1 Wallens Ridge State Prison
  - 3 Wise Correctional Unit
- #### P&P DISTRICTS
- 14 Danville
  - 16 Wytheville

- 17 Abingdon Additional Offices in Bristol, Russell, Smyth
- 18 Norton Additional Office in Luray
- 22 Martinsville Additional Office in Lee
- 28 Radford
- 37 Rocky Mount
- 43 Tazewell Additional Office in Buchanan

#### COMMUNITY FACILITIES

- AP Appalachian Men's Community Corrections Alternative Program

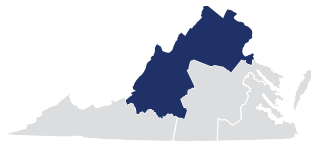
#### ADMINISTRATIVE OFFICES

- M Academy for Staff Development - Marion

#### REGIONAL VICTIM ADVOCATE

Beth Couch  
Victim Advocate  
(804) 836-2572

### MODIFIED NORTHWESTERN REGION



#### FACILITIES

- 11 Augusta Correctional Center
- 22 Coffeewood Correctional Center

- 13 Cold Springs Correctional Unit
- 12 Rustburg Correctional Unit

#### P&P DISTRICT

- 10 Arlington
- 11 Winchester Additional Offices in Front Royal, Woodstock
- 12 Staunton

- 13 Lynchburg
- 15 Roanoke
- 20 Bedford
- 21 Fredericksburg
- 25 Leesburg Additional Office in Warrenton
- 26 Culpeper
- 29 Fairfax Additional Office in Alexandria
- 35 Manassas

- 36 Alexandria
- 39 Harrisonburg Additional Office in Luray
- 40 Fincastle Additional Offices in Covington, New Castle, and Lexington

#### COMMUNITY FACILITIES

- CS Cold Springs Community Corrections Alternative Program

- HA Harrisonburg Men's Community Corrections Alternative Program
- ST Stafford Men's Community Corrections Alternative Program

#### ADMINISTRATIVE OFFICES

- W Western Regional Office

#### REGIONAL VICTIM ADVOCATE

Cristianne Potter  
Victim Advocate  
(434) 209-2158

### MODIFIED CENTRAL REGION



#### FACILITIES

- 18 Baskerville Correctional Center
- 21 Beaumont Correctional Center
- 15 Buckingham Correctional Center
- 29 Caroline Correctional Unit
- 27 Central Virginia Correctional Unit

- ▶ 16 Dillwyn Correctional Center
- ▶ 17 Fluvanna Correctional Center for Women
- 14 Halifax Correctional Unit
- ▶ 33 Haynesville Correctional Center
- 34 Haynesville Correctional Unit
- ▶ 19 Lunenburg Correctional Center
- 20 Nottoway Correctional Center
- 20 Nottoway Work Center

- ▶ 24 State Farm Correctional Center
- 25 State Farm Work Center
- ▶ 23 Virginia Correctional Center for Women

#### P&P DISTRICTS

- 1 Richmond
- 7 Petersburg
- 8 South Boston

- 9 Charlottesville
- 24 Farmville
- 27 Chesterfield
- 32 Henrico
- 33 Warsaw
- 41 Ashland

#### COMMUNITY FACILITIES

- CH Chesterfield Women's Community Corrections Alternative Program

#### SECURE MEDICAL FACILITIES

- + Medical College of Virginia

#### ADMINISTRATIVE OFFICES

- A Atmore Headquarters
- C Central Regional Office
- D Academy for Staff Development - Crozier

#### REGIONAL VICTIM ADVOCATE

Cheryle Parrish  
Victim Advocate  
(804) 396-0708

### MODIFIED EASTERN REGION



#### FACILITIES

- ▶ 31 Deerfield Correctional Center
- 31 Deerfield Men's Work Center
- 31 Deerfield Men's II Correctional Center
- ▶ 28 Greenville Correctional Center

- 28 Greenville Work Center
- 36 Indian Creek Correctional Center
- 26 Lawrenceville Correctional Center
- ▶ 35 St. Brides Correctional Center
- ▶ 30 Sussex I State Prison
- ▶ 32 Sussex II State Prison

#### P&P DISTRICTS

- 2 Norfolk
- 3 Portsmouth
- 4 Accomac
- 5 Gloucester
- 6 Suffolk
- 19 Newport News
- 23 Virginia Beach
- 30 Hampton

- 31 Chesapeake
- 34 Williamsburg
- 38 Emporia
- 42 Franklin

#### COMMUNITY FACILITIES

- BR Brunswick Community Corrections Alternative Program

#### SECURE MEDICAL FACILITIES

- + Southampton Memorial Hospital

#### ADMINISTRATIVE OFFICES

- E Eastern Regional Office

#### REGIONAL VICTIM ADVOCATE

Cheryl Moody  
Victim Advocate  
(804) 396-0688